



The TES Small Blue is unattended enforcement camera system that is used to automatically enforce Bus Lanes, Bus gates, School Schemes and Moving Traffic Contraventions.

TES Small Blue sends encrypted evidence using wireless transmission over the 3G/4G network to a control centre where it can be processed by an operator using a compatible Review Client such as TES Review. Evidence of verified contraventions can then be transferred to a Notice Processing system for further action.

The Small Blue combines a powerful HD Camera with Automatic Number Plate Recognition (ANPR) to provide reliable high quality video evidence.

The complete camera system is compact and unobtrusive and is easily mounted on suitable existing street furniture, buildings or a dedicated CCTV post and only requires a 240V power connection to operate.



GEN 3 Bus Lane / MTC Camera System

The Small Blue camera system can be used for the unattended enforcement of Bus Lane, Bus Gates, School Keep Clears plus Moving Traffic Contraventions (including Yellow Box Junctions, No-Entries, Banned Turns, No Vehicle and Lower Traffic / School Access Schemes).

Key Benefits

- Efficient enforcement of Bus Lanes, SKC and Moving Traffic Contraventions in one package.
- Easy installation, camera and evidence processor only requires mains power.
- Flexible purchase or rental options available.



Main Features

- Unattended enforcement of Bus Lanes, SKC and MTC contraventions.
- Uses an HD Camera and ANPR engine to identify vehicles in contravention and capture video evidence.
- Day / Night Operation.
- Transfer of encrypted evidence via 4G/Wi-fi or LAN to TES Review.
- Multiple White Lists.
- Remote on screen, camera adjustment and configuration.
- Remote system status monitor.
- Multiple Lane Support.
- Manufacturers Approved Device Certification.

Camera Specification

- ½ "CMOS Sensor
- Full HD 1080p
- 6-120mm Optical Zoom
- Day & Night Vision.
- 40°C~+60°C All weather tolerance.
- Built in Heater and lens Wiper.
- Weather-proof IP66 outdoor housing.



Evidence Unit Specification

- i7 Quad Core Processor.
- 16GB of DDR3 memory.
- SATA3 SSD.
- 4G/Wi-Fi/LAN
- Watchdog
- UPS



Installation

The camera and evidence unit are easily mounted to pre-existing street furniture or a dedicated column via the fixing brackets provided with the system.

System Requirements

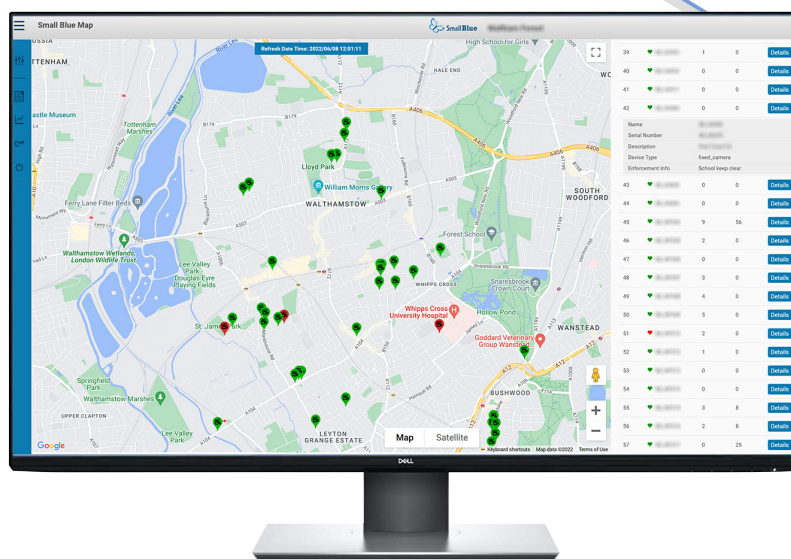
- TES Review Client for authentication of video evidence and integration with the Notice Processing System.
- Connection to a WLAN via the 3G/4G Router.
- 240V power connection.

GEN 3

Optional Features

Integration with TES CDM Platform

Summary information for each camera including, vehicle counts, number of detections and the review status, detections details for each camera is available in real time as a dashboard in TES CDM Platform (Compliance Display Map).



Vehicle Counting and Classification

The Small Blue camera software can count the number of vehicles passing through the camera location. This can be cross referenced with other data sets (for example the class of vehicle, engine type) This can also be merged with the air quality data to produce vehicle volume statistics by day, week month etc. Data can be downloaded from the CDM platform in csv file format and merged with other data for analysis.

Noise Monitoring

The Small Blue can be fitted with a microphone that can be used to monitor the traffic noise at the camera location. The sound level (in dB) at the time of a contravention can be recorded with the video evidence. (note this is used for monitoring purposes only).

Air Quality Transmitter

The Air Quality Transmitter features two model types, Gas Only and Gases and Particulates. The unit is powered from the camera power supply, data is transferred to the evidence processor via a wireless connection.

- Gas only measures four most common urban air pollutants: NO₂, NO, CO, and O₃.
- Particulates measured are PM_{2.5} and PM₁₀.
- Air Samples for NO₂, NO, CO, and O₃ taken every minute, PM sampled every 10 mins with an average taken by the minute.
- Air Quality sensors also measure air temperature, pressure and humidity.
- Data transmitted via Small Blue evidence unit to TES servers for collation and analysis in CDM.